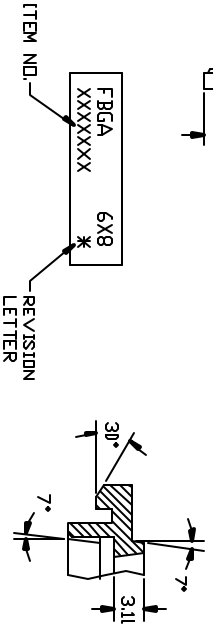
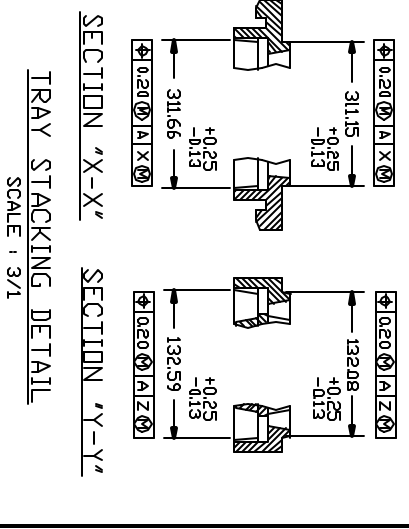
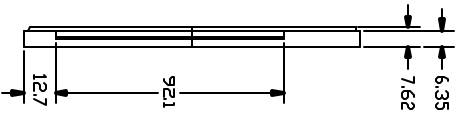
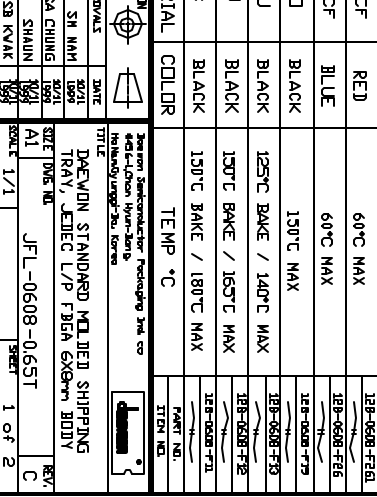
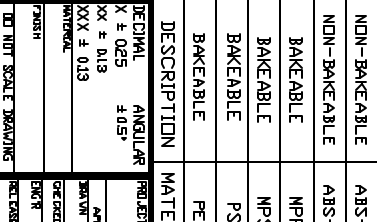
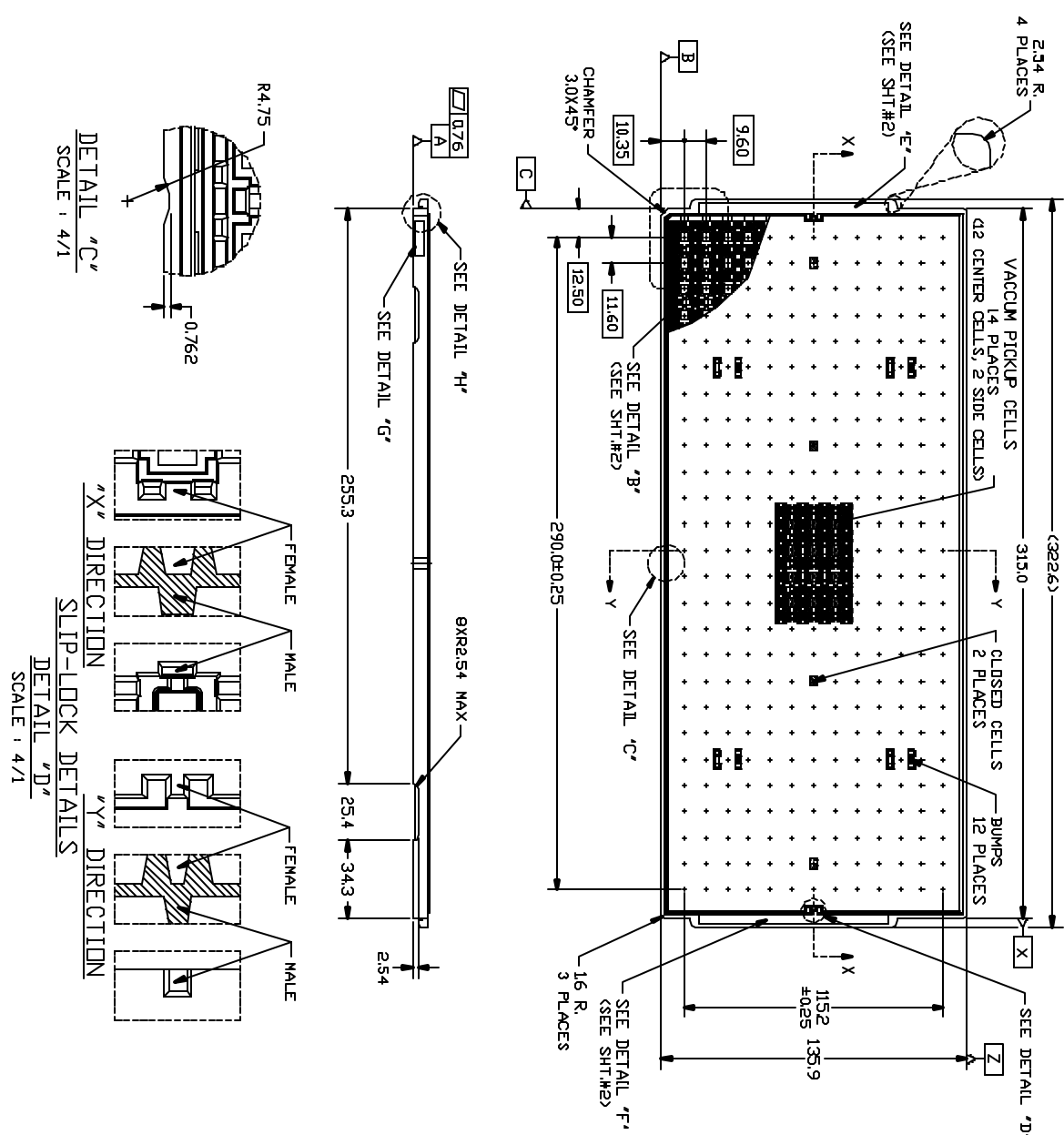
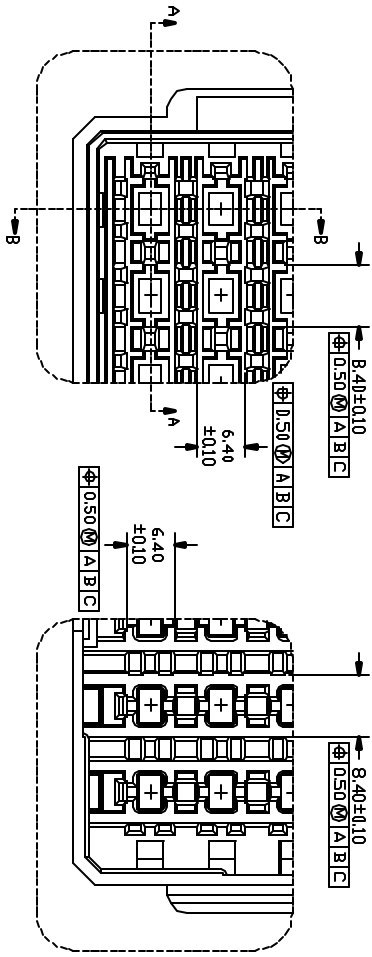


THIS DRAWING IS A DAEVON PROPRIETARY  
NO COPY IS ALLOWED WITHOUT DAEVON'S PERMISSION



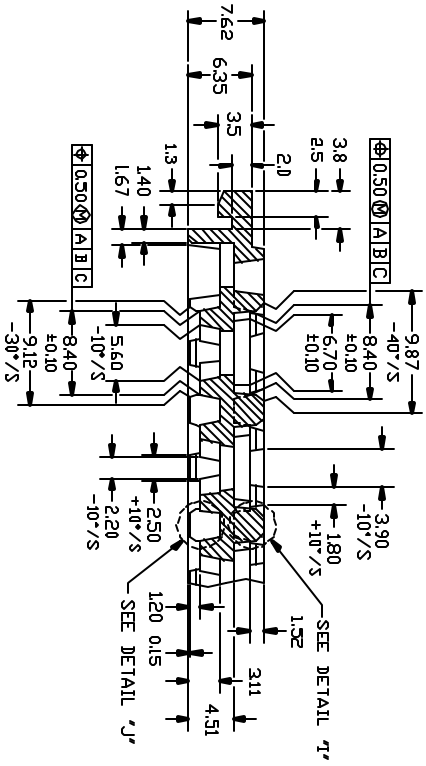
2 CELL COUNT IS 13 X 26 = 338  
<NOTE> 1. CONFIRM TO EIA-541

DESCRIPTION	REVISION	DATE	APPROVAL
NON-BAKABLE	ABS+CF	RED	12B-0608-FF6J
NON-BAKABLE	ABS+CF	BLUE	12B-0608-FF6G
BAKABLE	NPPD	BLACK	12B-0608-FF6H
BAKABLE	NPSU	BLACK	12B-0608-FF6I
BAKABLE	PSU	BLACK	12B-0608-FF6K
BAKABLE	PES	BLACK	12B-0608-FF6L
DESCRIPTION	MATERIAL	COLOR	TEMP °C
DESCRIPT			
ANGL DR	± 0.5°		
X ± 0.25			
XX ± 0.13			
XXX ± 0.13			
FINISH			
ENGR	SHAUN	DATE	SCALE 1/1
DESIGNED	3B KWAK		SHEET 1 OF 2

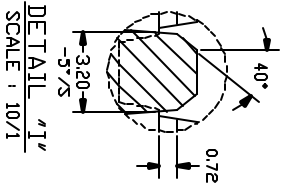


TOP VIEW  
DETAIL "B"  
SCALE: 3/1  
(FROM SHT.#1)

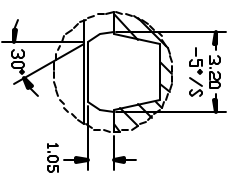
BOTTOM VIEW  
DETAIL "B"  
SCALE: 3/1  
(FROM SHT.#1)



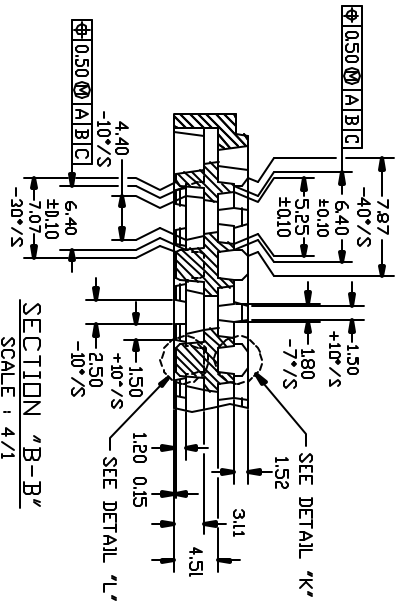
SECTION "A-A"  
SCALE: 4/1



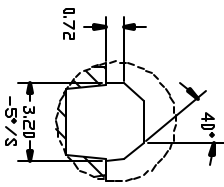
DETAIL "I"  
SCALE: 10/1



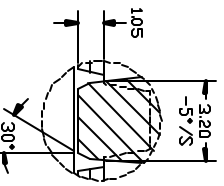
DETAIL "J"  
SCALE: 10/1



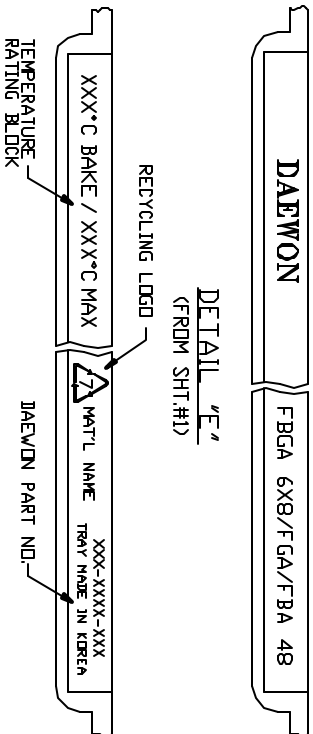
SECTION "B-B"  
SCALE: 4/1



DETAIL "K"  
SCALE: 10/1



DETAIL "L"  
SCALE: 10/1



DETAIL "E"  
(FROM SHT.#1)

DETAIL "F"  
(FROM SHT.#1)

DATE	BY	CHK	APP	REV	DESCRIPTION
11/17/01	JL	DK		1	TRAY, JEDEC L/P FBGA 6X8mm BODY
				2	

TRAY  
DAEWON STANDARD MOLDED SHIPPING  
TRAY, JEDEC L/P FBGA 6X8mm BODY  
REV 1/1  
JL-DK-0618-10627  
PAGE 2 OF 2